



deck the cookies

3 beginner cookie decorating guide



Iced
Kitchen

table of contents

04 [Supply List +
Important Links](#)

05 [Icing Consistency,
Coloring + Bagging](#)

10 [Wreath](#)

12 [Tree](#)

14 [Candy Canes](#)

16 [Storing + Sharing](#)



follow along on YouTube



- sugar cookies
- royal icing
- toothpick or scribe
- red gel food coloring
- white gel food coloring*
- yellow gel food coloring
- blue gel food coloring
- paper towel
- 6 tipless piping bags (or more)
- luster dust*
- luster dust puffer*

*optional

get your supplies together

Before we dig into decorating, make sure you have baked your cookies (roughly 2 dozen, but you can do more or less) and made your royal icing (one batch of my recipe will work for 2 dozen cookies). Recipes are linked in the supply list and videos walking through each recipe can be found linked below.



divide and color your icing

Typically I recommend a one bowl method, where you mix all the colors in one bowl, one color at a time. But with this set using 3 colors and they all are so different from one another, I recommend rinsing the bowl out in between the green and red.

- Add white food coloring to all your icing when it's in the bowl (or don't add white food coloring at all. The white won't be as *crisp* but it will still look white)
- Add red food coloring until your color doesn't develop any darker/richer. It may still look pink - that's okay! As it dries it will get darker
- Create green with a 2-1 mix of yellow food coloring and blue. Again, add color until it doesn't get any darker or you achieve the color you want.

Be sure to add the color before adding any water to get to the right consistency. Especially as the color you want to achieve is richer in tone or darker, the icing will become a thinner consistency from the gel food coloring.

Additionally, do not continue to add food coloring if the color is not getting any darker/developing into a darker color. It will dry darker than you think!

mix the icing consistency

When using royal icing, the consistency of the icing allows you to do different decorations. Often what you see on social media or in recipes are two different icing consistencies, a line and a flood. But for these cookies, you'll have one consistency that sits between a line and a flood.

This is a 20 second icing. It's names come from the amount of time it takes the icing to "settle" or level out on a cookie.

After you've mixed in the food coloring, add a little bit of water at a time (I tend to do 1/4 - 1/2 teaspoon) until you get to the right consistency.

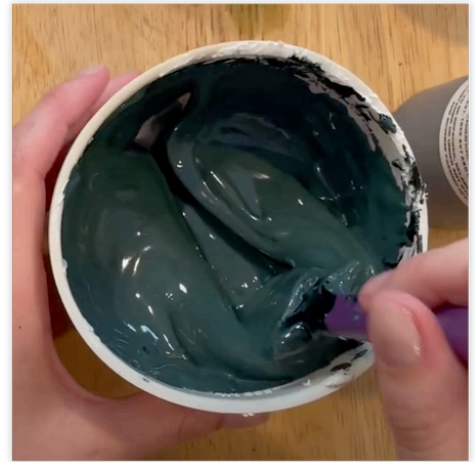
The 20 second consistency will take 20 seconds to settle after you run a spoon or knife through it. You can also lift a small amount with a spatula and see how it runs off, like Elmer's Glue.

This consistency is thick enough to create its own "edge" so the icing doesn't run over the side of a cookie (replacing the need for a "line" consistency), but also thin enough to fill a cookie like a "flood" consistency would.

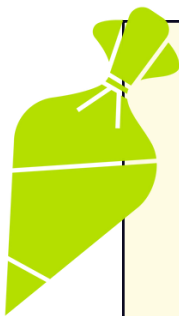
It also allows you to do "wet on wet" decorating, where you place different colors of icing that are the same consistency on or near one another to decorate.

20 second icing

Before adding water and then at the right consistency



If you make your icing a little bit too thin, don't worry! A 20 second icing can still work as thin as 15 seconds. If it is accidentally thinner than that, mix in a tablespoon of powdered sugar one at a time until it's thickened up.



if your icing is too thin, add a tablespoon of powdered sugar at a time to thicken it back up!

bag the icing

Majority of the time, you will want to put all of your different icing colors and consistencies into their own tipless piping bag. Tipless piping bags are one time use piping bags that do not require a piping tip in order to be used. Instead you cut the tip of your piping bag to the desired size or shape.



tipless piping bag



piping bag with a tip

You can get tipless piping bags in a variety of sizes, a good size for any cookie project is a 12 inch piping bag. You can fill these with a large amount of icing or a small amount based on your needs.

When doing more precise design work, it's easier for you to use smaller piping bags or to not fill your bag as full as possible. This allows you more hand dexterity.

It's like writing with a pencil, too big and you'll be more clumsy, thinner and smaller and you can write just fine!



fill your piping bag

Use a cup, open your piping bag, and place it inside



Pour your icing inside the piping bag



Once filled, pull up the sides of the bag, twist the end, and tie into a knot or clip the end



cut the end of your piping bag

When you're ready to decorate, grab your piping bag and flatten out the end, placing the seam face up. This will allow you to cut a straight line on the end of the piping bag, creating a circle for the icing flows through it.

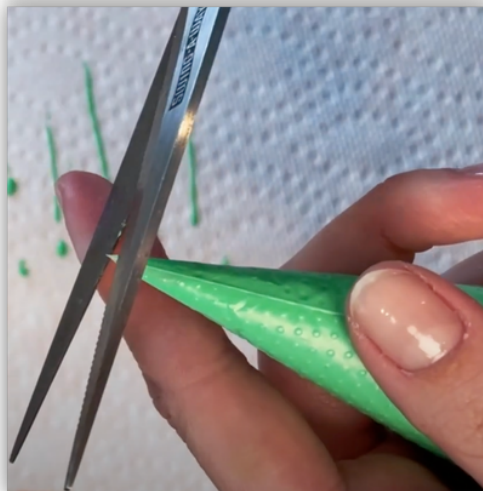
Start by cutting a small amount off the end and test piping until you can pipe a line of icing without needing too much pressure.

If you end up cutting too much off, start over with a new bag!

Place the seam side up and flatten the tip of the bag



Cut a small piece, straight across the end



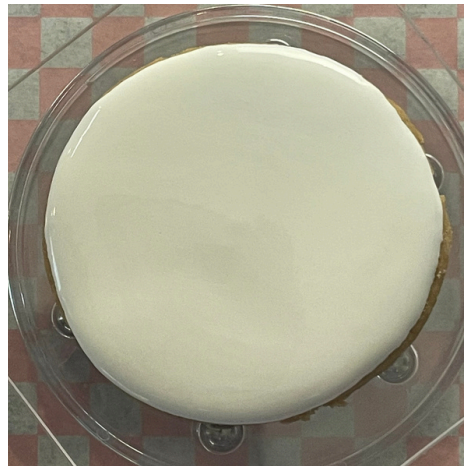
If your icing is “curling” around the end of the piping bag, turn the bag 90 degrees and cut another straight line. Sometimes straight cuts from one angle can cause curved cuts from another. It’s annoying.

decorate: wreath cookie

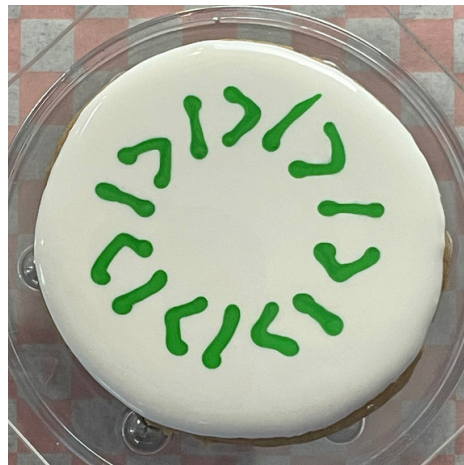
Outline the cookie
in white icing



Fill in the outline
with white icing



With green, pipe
lines then arrows,
making a circle



Drag your scribe in a circle 2-3 times in the middle of the green lines



Add red dots in clusters of three for holly berries



Add luster dust if you want a lil sparkle

Your wreath cookie is complete!

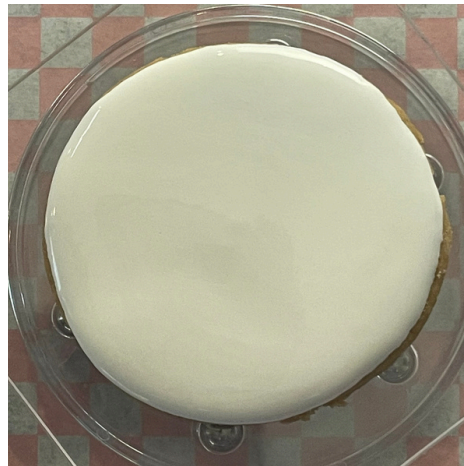


decorate: tree cookie

Outline the cookie
in white icing



Fill in the outline
with white icing



With green, pipe a
wavy line,
gradually getting
wider - like a tree



From the top of the tree, drag your scribe down, optionally drag your scribe slightly up at the top of the tree after



Add red dots across the tree like ornaments



Add luster dust if you want a lil sparkle

Your tree cookie is complete!

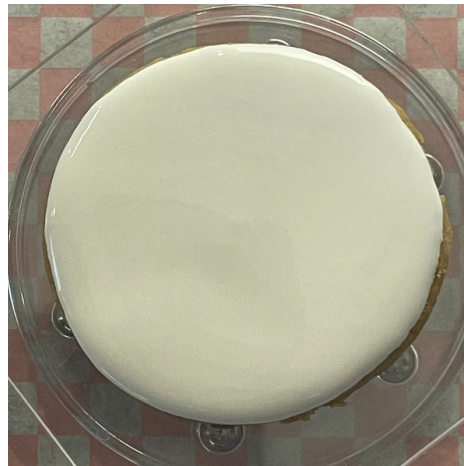


decorate: candy canes cookie

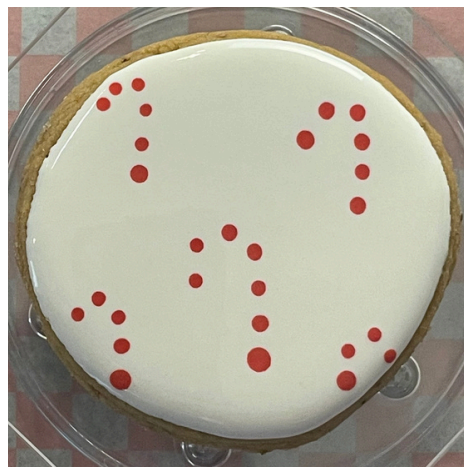
Outline the cookie
in white icing



Fill in the outline
with white icing



Add red dots,
making the shape
of a cane around
the cookie



Drag your scribe from the bottom right side of a candy cane and all around until you reach the beginning



Repeat dragging your scribe for each candy cane



Add luster dust if you want a lil sparkle

Your candy cane cookie is complete!



storing and sharing

You can store your cookies in an air tight container or bag. They will remain soft cookies for around two weeks in a sealed container. You can even freeze them to enjoy later.

Share with friends or family or keep all for yourself!

enjoy your cookies!

